



SPARK ART FAIR VIENNA
EBENSPERGER: Blalla W. Hallmann
14.–17. March 2024

Booth H5
Marx Halle
Karl-Farkas-Gasse 19
1030 Vienna, Austria

"In his paintings, Hallmann creates an imaginative world theatre that comes close to and even surpasses the apocalyptic tableaux of Hieronymus Bosch in terms of cruelty. Hallmann's criticism of the present, in which he repeatedly saw the traces of the excesses of violence and destruction of the 20th century and understood them as a continuation of the inglorious history of mankind, which was riddled with terror, oppression, and wars, was so comprehensive that he succeeded in bringing together a huge cast of characters from various historical and mythological contexts." - Matthias Reichelt

In 1990, Blalla W. Hallmann dedicated his 31-work series of reverse glass paintings to the themes of religion, power/abuse of power, sexuality/sexual abuse, and fanatical nationalism. His depictions, based on folk art, utilise the seemingly harmless and trivial world of Disney characters and popular culture and place them behind glass - more precisely, behind window glass. Hallmann removed the windows during the demolition of a factory building in Düsseldorf at the end of the 1980s.

The creation of the 31 reverse glass paintings was documented. This documentation will be shown in full for the first time at the Spark - Art Fair Vienna.

EBENSPERGER's booth concept was based on the permanent presentation in the former studio of Blalla W. Hallmann (now: Blalla Museum/Blalla Haus) in Windsbach, Bavaria. There, three scene-like works entitled Spielothek 1-3 are placed in front of some of the reverse glass paintings. This group of sculptures deals with obsessive sexuality and fanatical religiosity and thematically complements the reverse glass works. For its first participation in Spark - Art Fair Vienna, EBENSPERGER is pleased to be able to show Spielothek 1-3 as well as part of Blalla W. Hallmann's series of reverse glass works that is not part of Albertina's collection.





Blalla W. Hallmann
Du sollst Vater und Mutter ehren!
1990
Acrylic behind glass
120 x 110 cm



Blalla W. Hallmann
Ecce - Homo
1990
Acrylic behind glass
120 x 110 cm



Blalla W. Hallmann
Heilig, Heilig, Heilig
1990
Acrylic behind glass
120 x 110 cm



Blalla W. Hallmann
Endlich Hoch-Zeit auf dem Boden der westlichen Wertegemeinschaft
1990
Acrylic behind glass
120 x 110 cm



Blalla W. Hallmann
JA JA
1990
Acrylic behind glass
120 x 110 cm



Blalla W. Hallmann
OoooooH, OoooooH, OoooooH
1990
Acrylic behind glass
120 x 110 cm



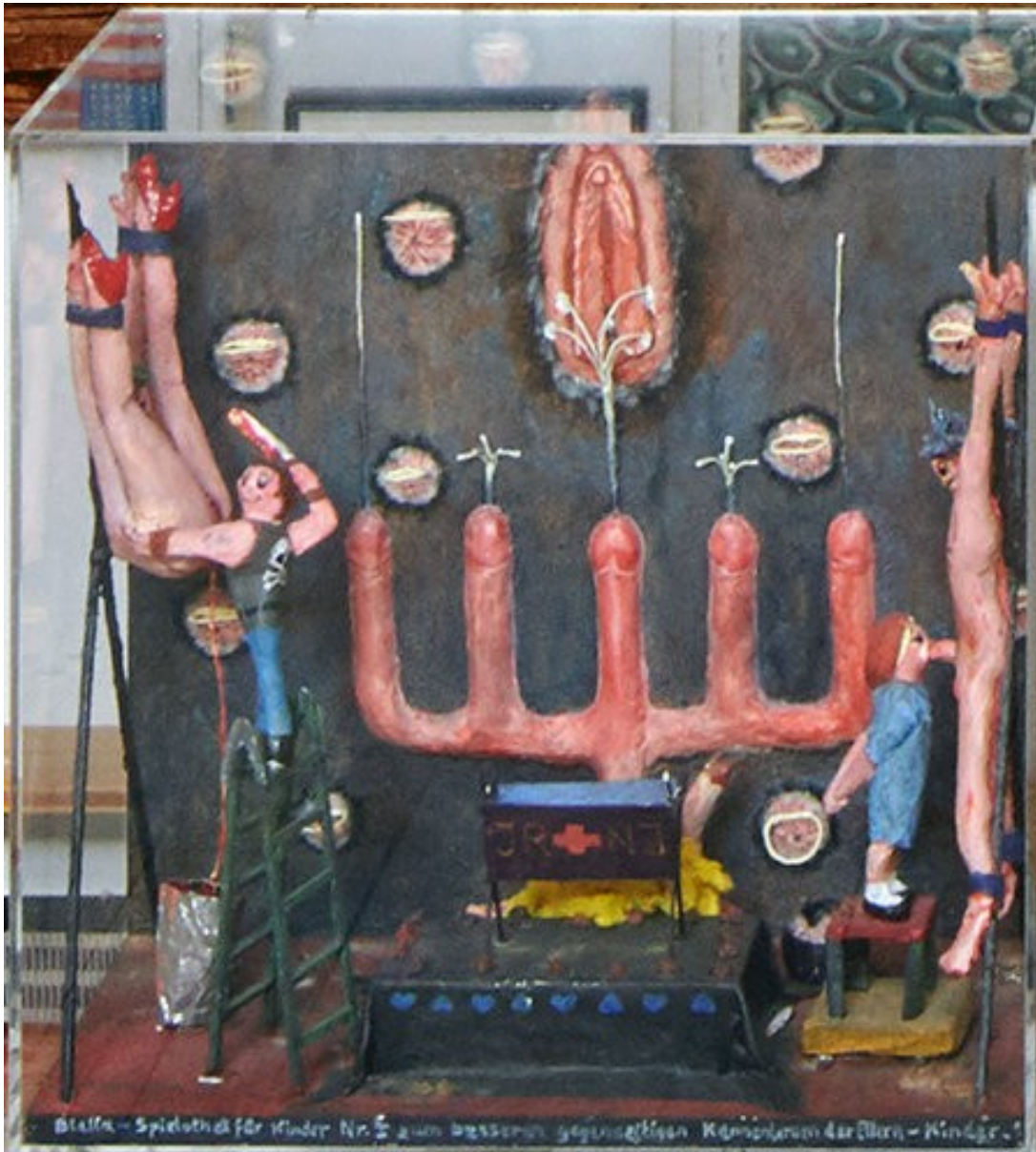
Blalla W. Hallmann
Vater, nicht mein, sondern Dein Willi geschehe! Wie auf Erden so im Himmel
1990
Acrylic behind glass
120 x 110 cm



Blalla W. Hallmann
Vater, Vater, warum haßt du mich verlassen!
1990
Acrylic behind glass
120 x 110 cm



Blalla W. Hallmann
Wenn das HERR liebt das züchtigt ES
1990
Acrylic behind glass
120 x 110 cm



Blalla W. Hallmann
Blalla - Spielothek für Kinder Nr. I zum besseren gegenseitigen Kennenlernen der Eltern Kinder
1993

58.5 x 58.5 x 30 cm



Blalla W. Hallmann
Blalla - Spielothek für Kinder Nr. II zum spielerischen Erlernen der biblischen Themen: "Mütter - Söhnchen"
1993

58.5 x 58.5 x 30 cm

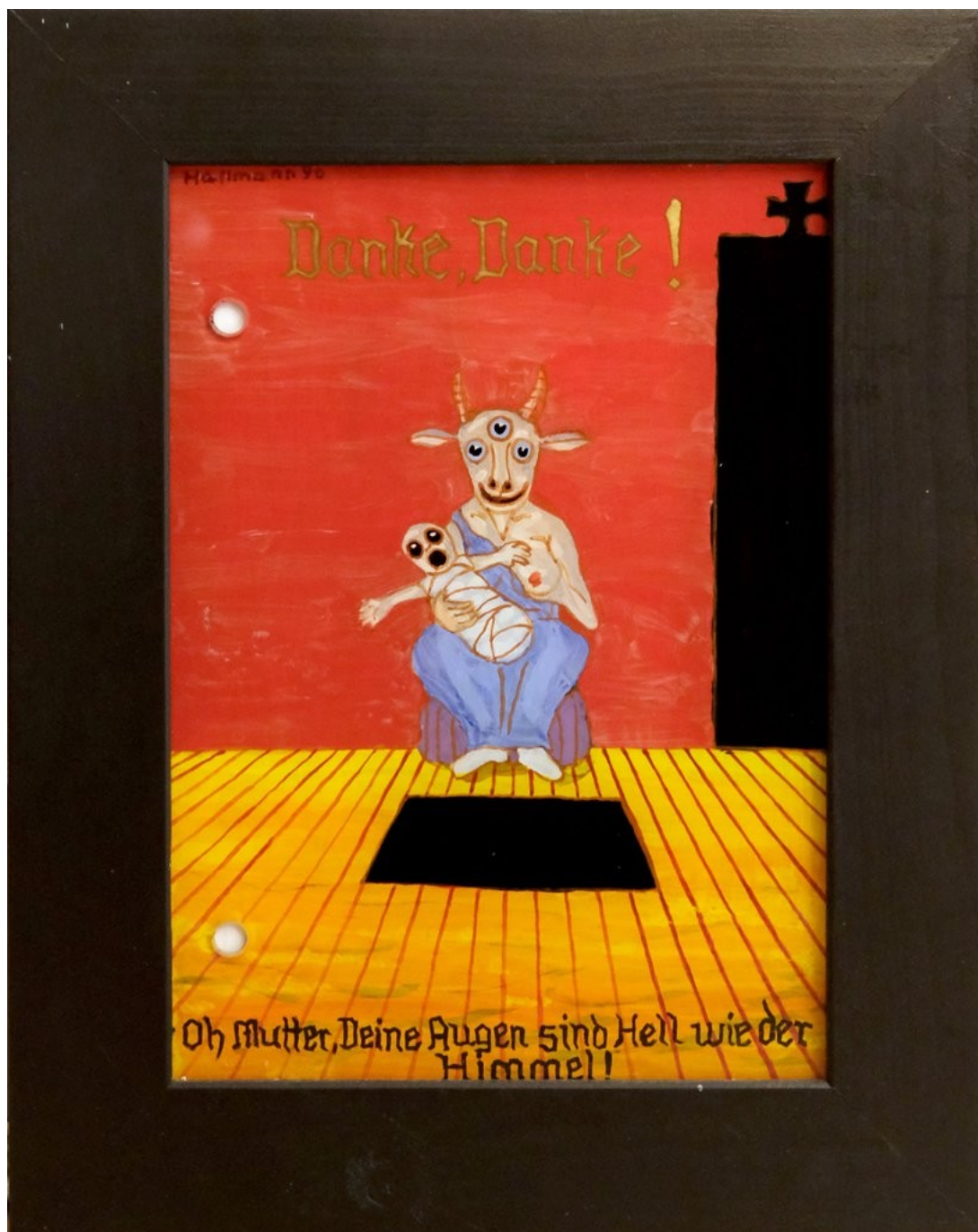


Blalla W. Hallmann

Blalla - Spielothek für Kinder Nr. III zum tieferen Verstehen der kosmischen Zusammenhänge von Religion: "Gott-Mensch" e.V.

1993

58.5 x 58.5 x 30 cm



Blalla W. Hallmann
Danke, Danke! Oh Mutter, Deine Augen sind Hell wie der Himmel!
1990
Acrylic behind glass
28.8 x 22.3 cm



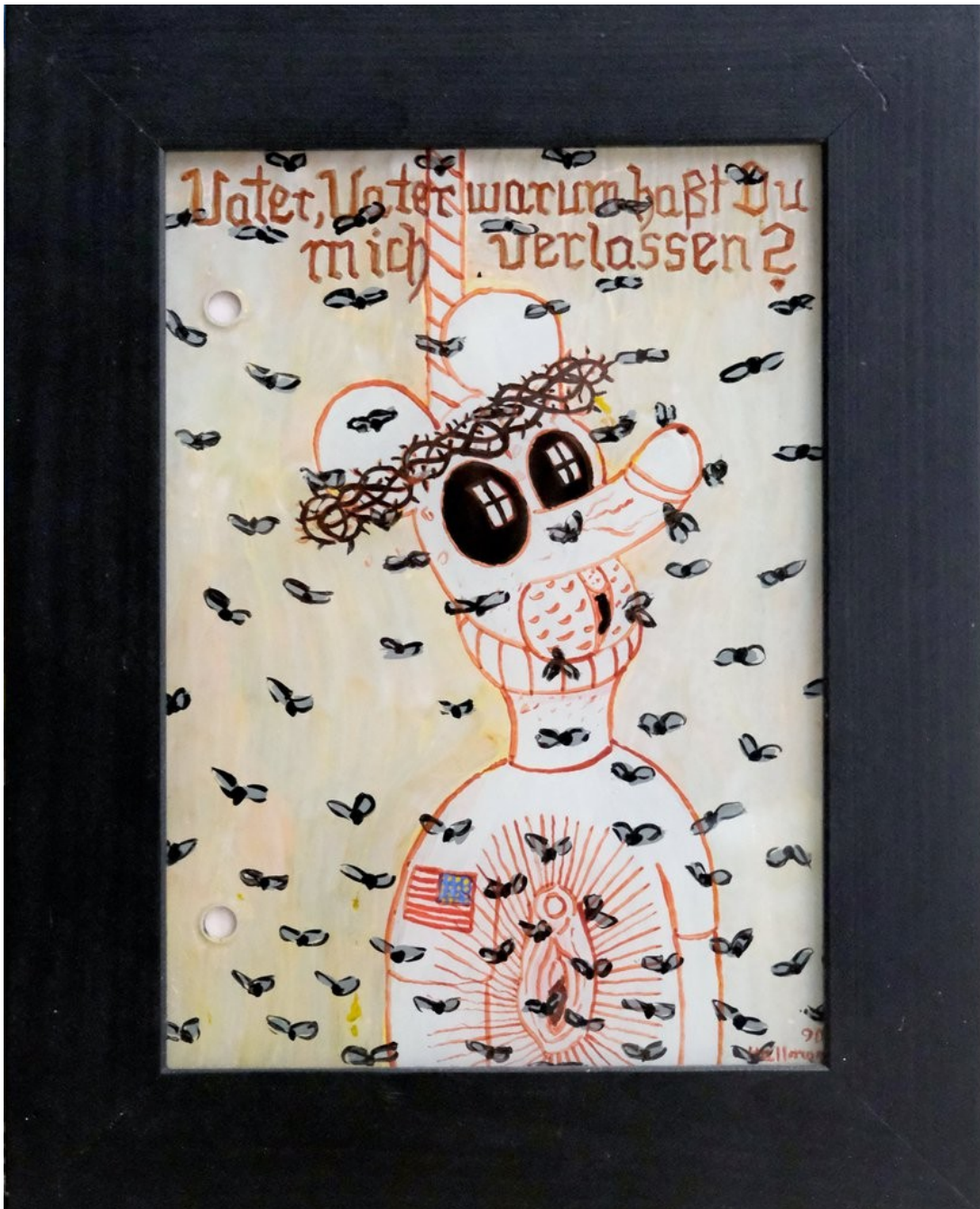
Blalla W. Hallmann
Ruhet sanft! Die Be-Erdigung
1990
Acrylic behind glass
29 x 20,3 cm



Blalla W. Hallmann
Die Bewegung
1991
Acrylic behind glass
29,2 x 20,2 cm
SOLD



Blalla W. Hallmann
Das Gesicht
1990
Acrylic behind glass
29,2 x 20,2 cm



Blalla W. Hallmann
Vater, Vater, warum haßt Du mich verlassen!
1990
Acrylic behind glass
28,8 x 20,3 cm



Blalla W. Hallmann
Gott sieht alles!
1990
Acrylic behind glass
28,8 x 20,3 cm



Blalla W. Hallmann
18 Augen-Eiszeit
1990
Acrylic behind glass
29,2 x 20,2 cm



Blalla W. Hallmann
Die Geburtshilfe
1990
Acrylic behind glass
29,2 x 20,3 cm



Blalla W. Hallmann
Es ist ein Ros entsprungen
1990
Watercolour on paper
19 x 14 cm



Blalla W. Hallmann
Es stinkt; um Himmels Willen
1990
Watercolour on paper
19 x 14 cm



Blalla W. Hallmann
Vater! Dein Willi geschehe!
1990
Watercolour on paper
19 x 14 cm



Blalla W. Hallmann
Im Namen des Vaters, des Sohnes und heil Geistes
1990
Watercolour on paper
19 x 14 cm



Blalla W. Hallmann
Wenn das HERR liebt, das züchtigt ES
1990
Watercolour on paper
19 x 14 cm



Blalla W. Hallmann
Der ungläubige Tommy; oder: Erhöhte Temperatur
1990
Watercolour on paper
19 x 14 cm